

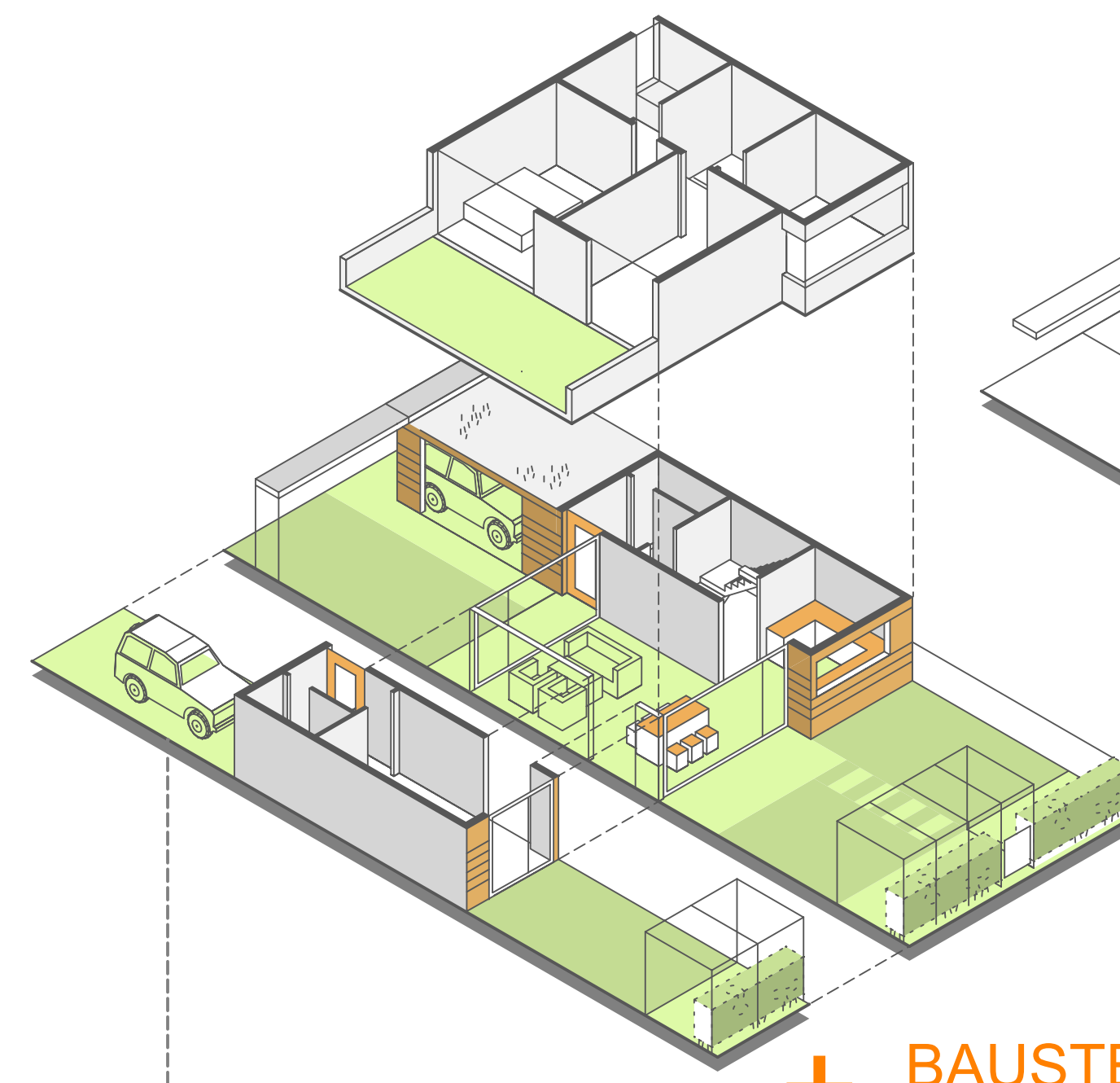
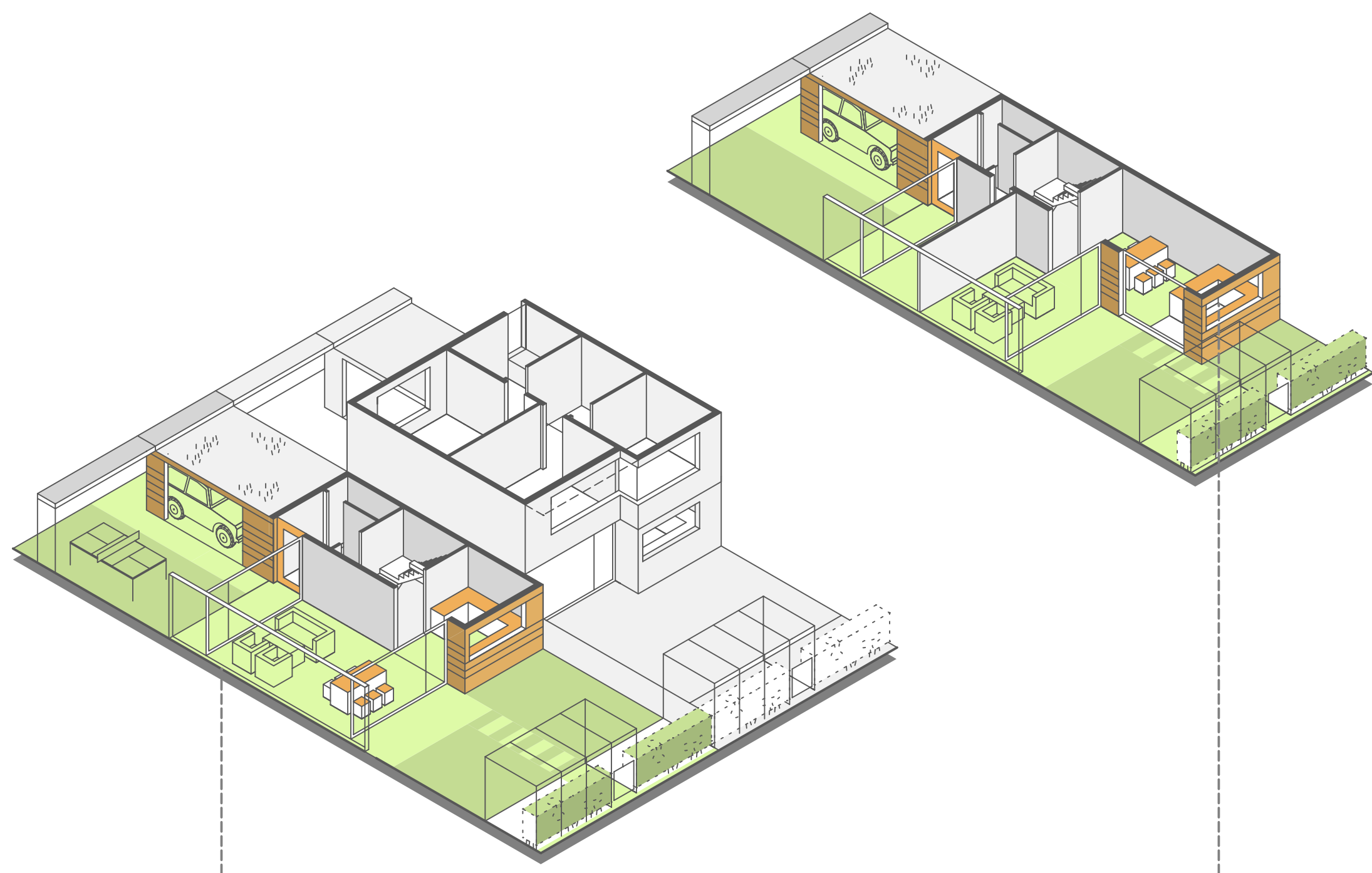
"Das Modulhaus _ kostengünstig und vielfältig durch Kombination verschiedener standardisierter Bausteine"

BASISMODUL _ Typ A

GARTENHOFHAUS _ Typ B

KETTENHAUS _ Typ C

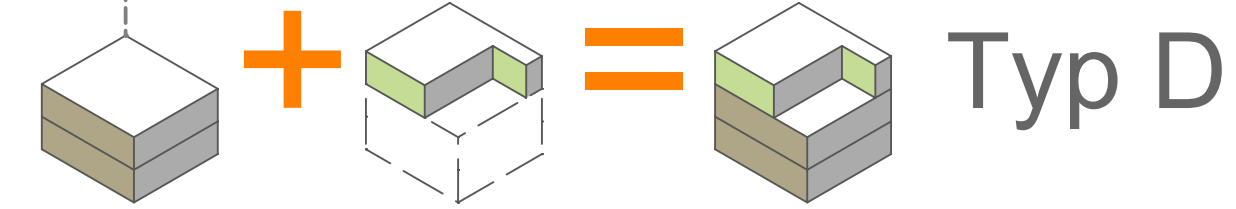
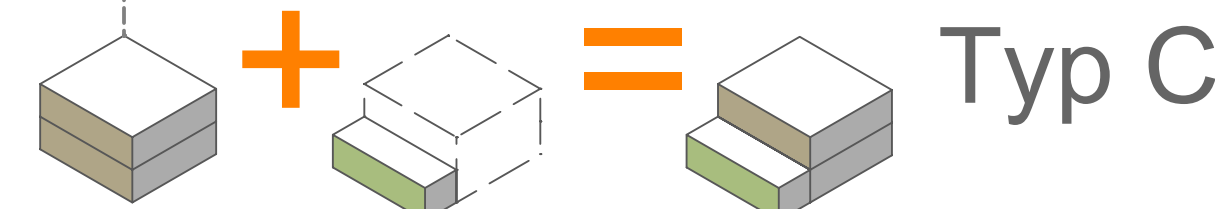
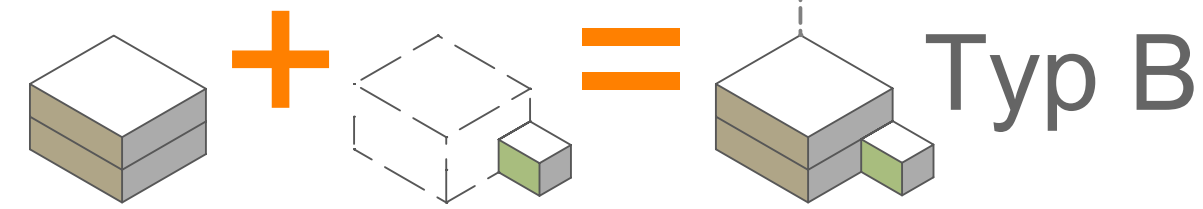
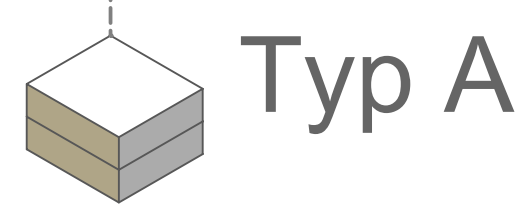
STADTHAUS _ Typ D



+ BAUSTEIN 3 Dachstudio

+ BAUSTEIN 4 Luftraum

+ BAUSTEIN 2 Einlieger

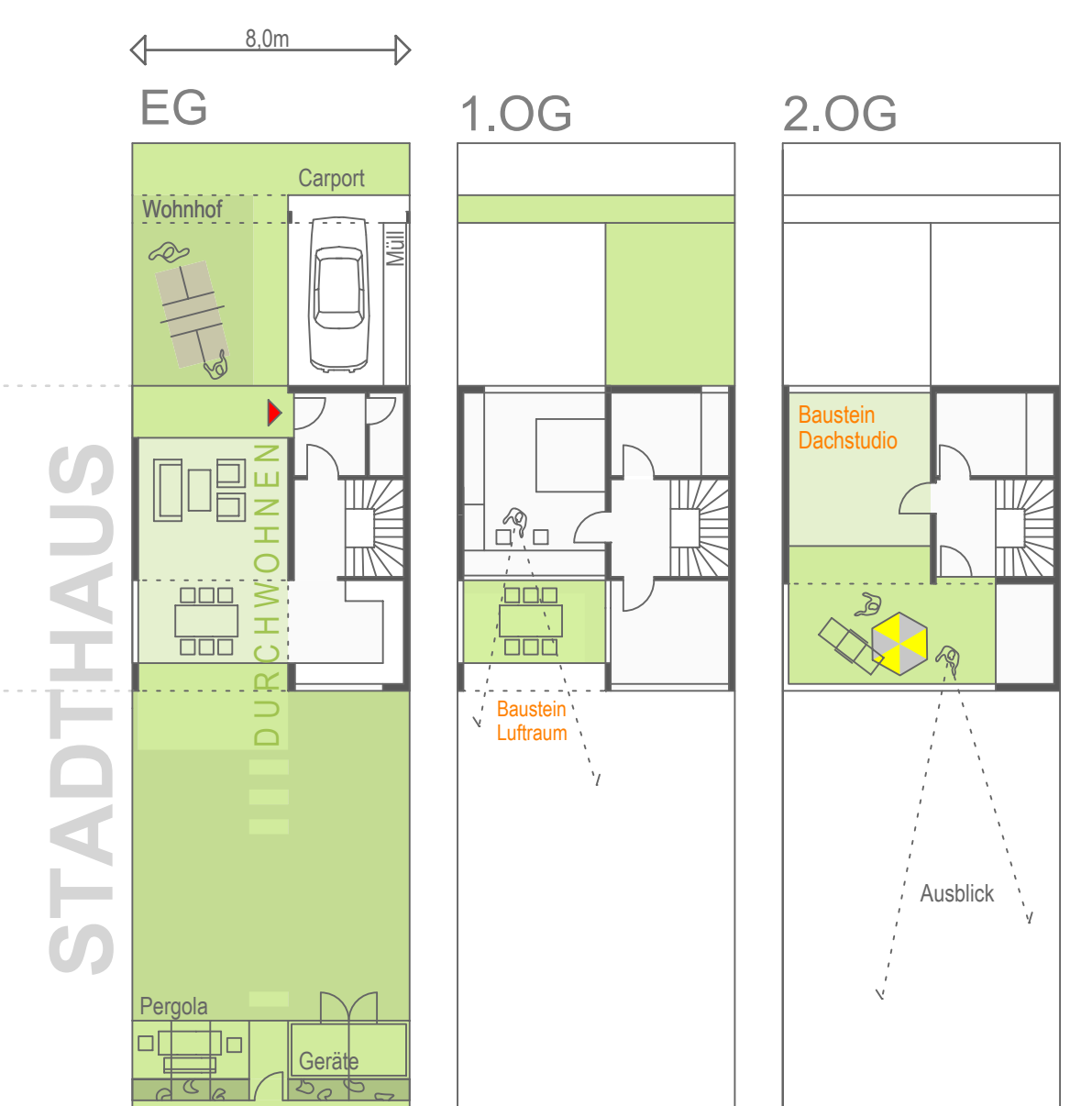
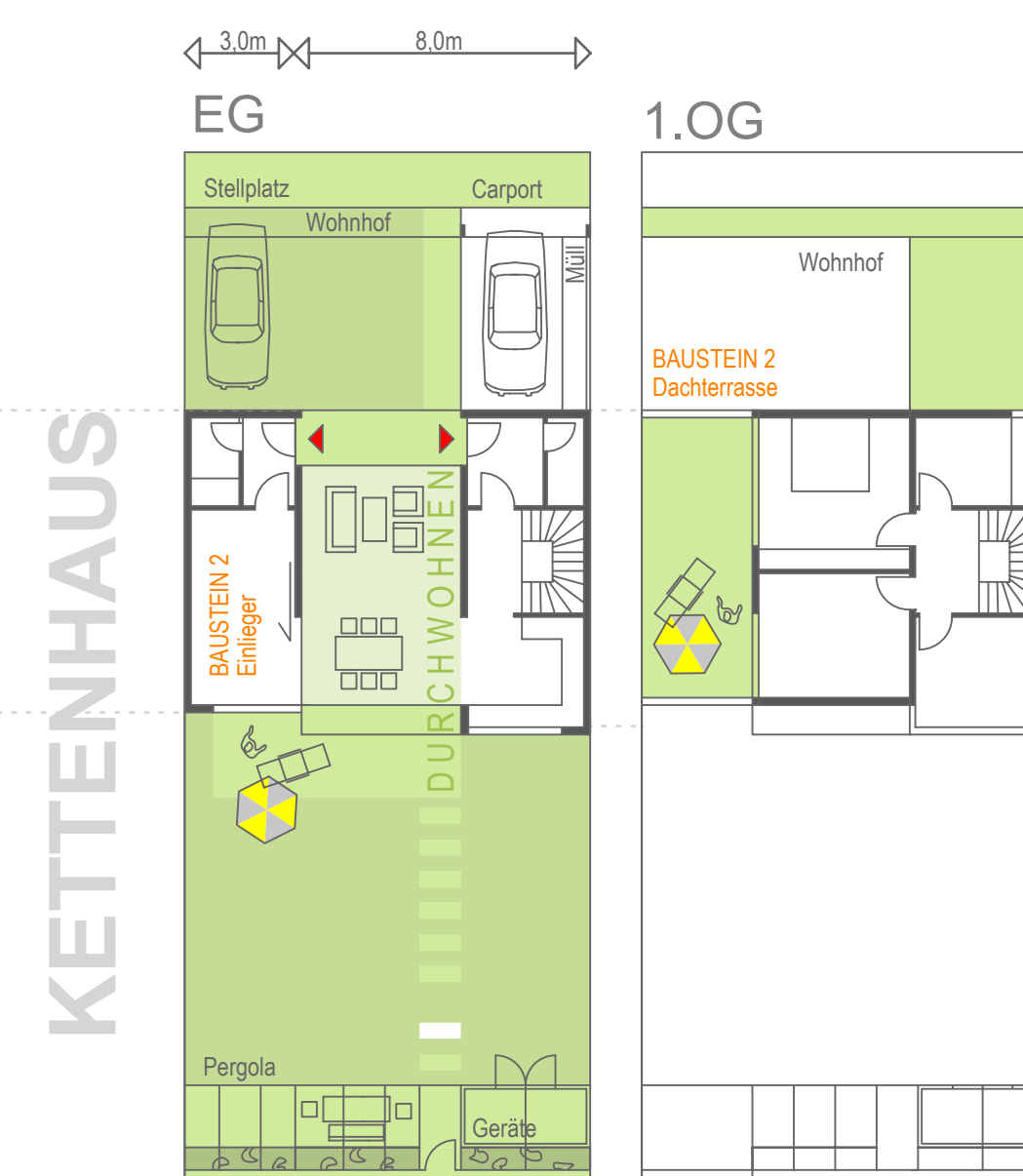
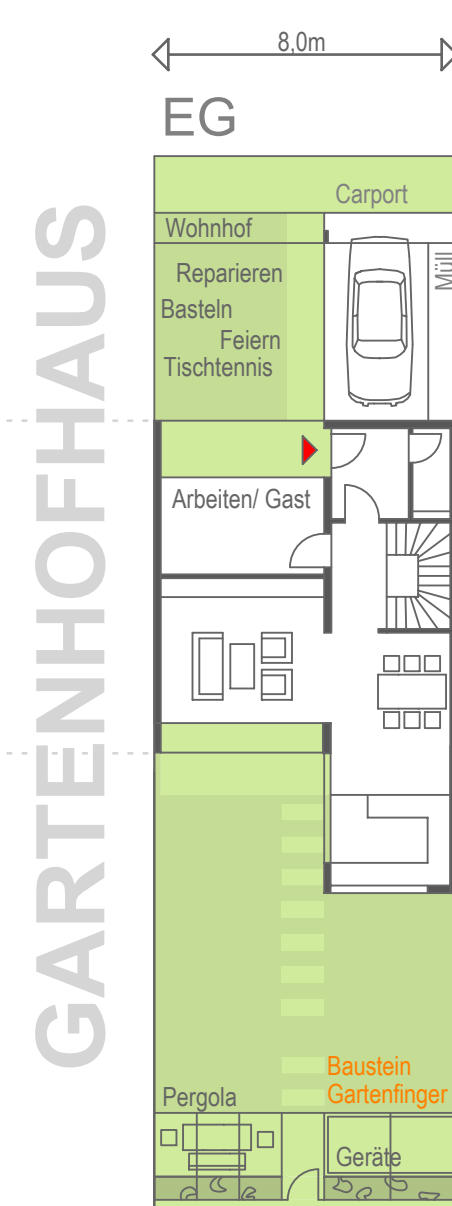
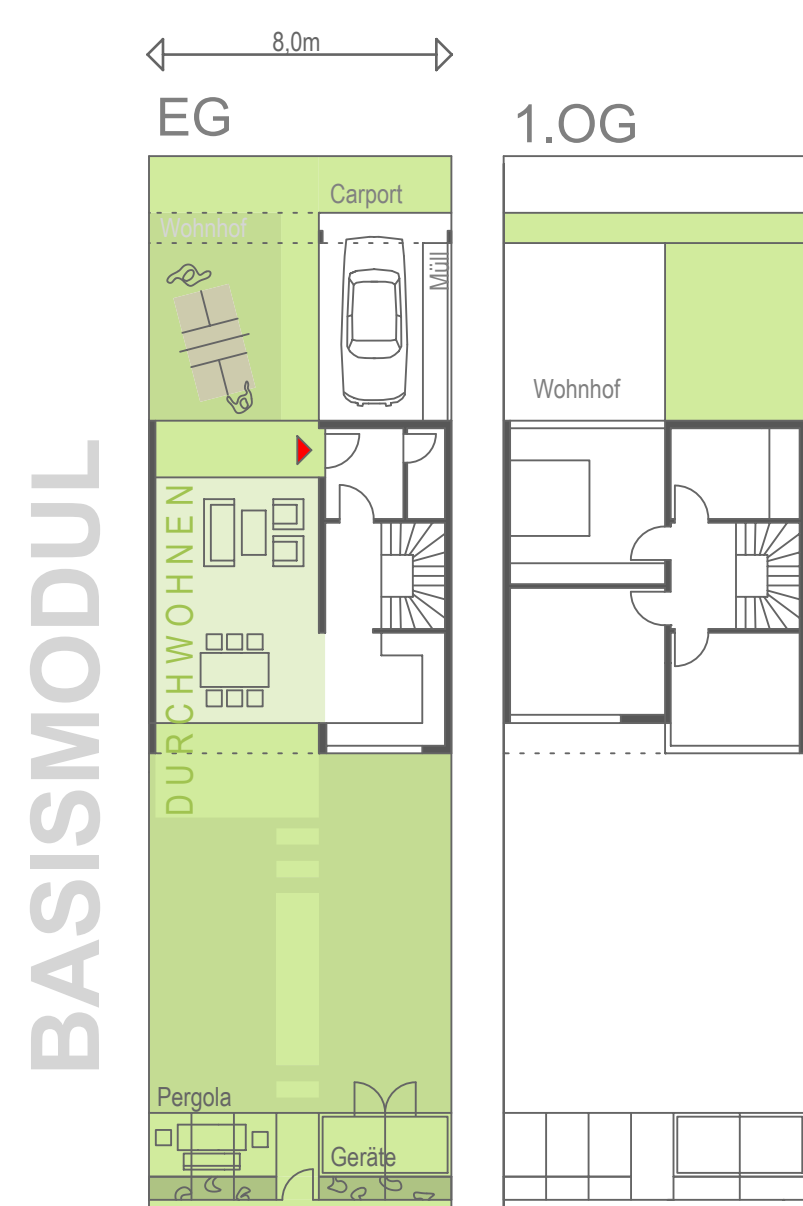


Basismodul = Wfl. 111m²

Basismodul 108m² + Gartenfinger 12m² = Wfl. 122m²

Basismodul 108m² + Einlieger 28m² = Wfl. 142m²

Basismodul 108m² + Dachstudio 35m² + = Wfl. 141m²



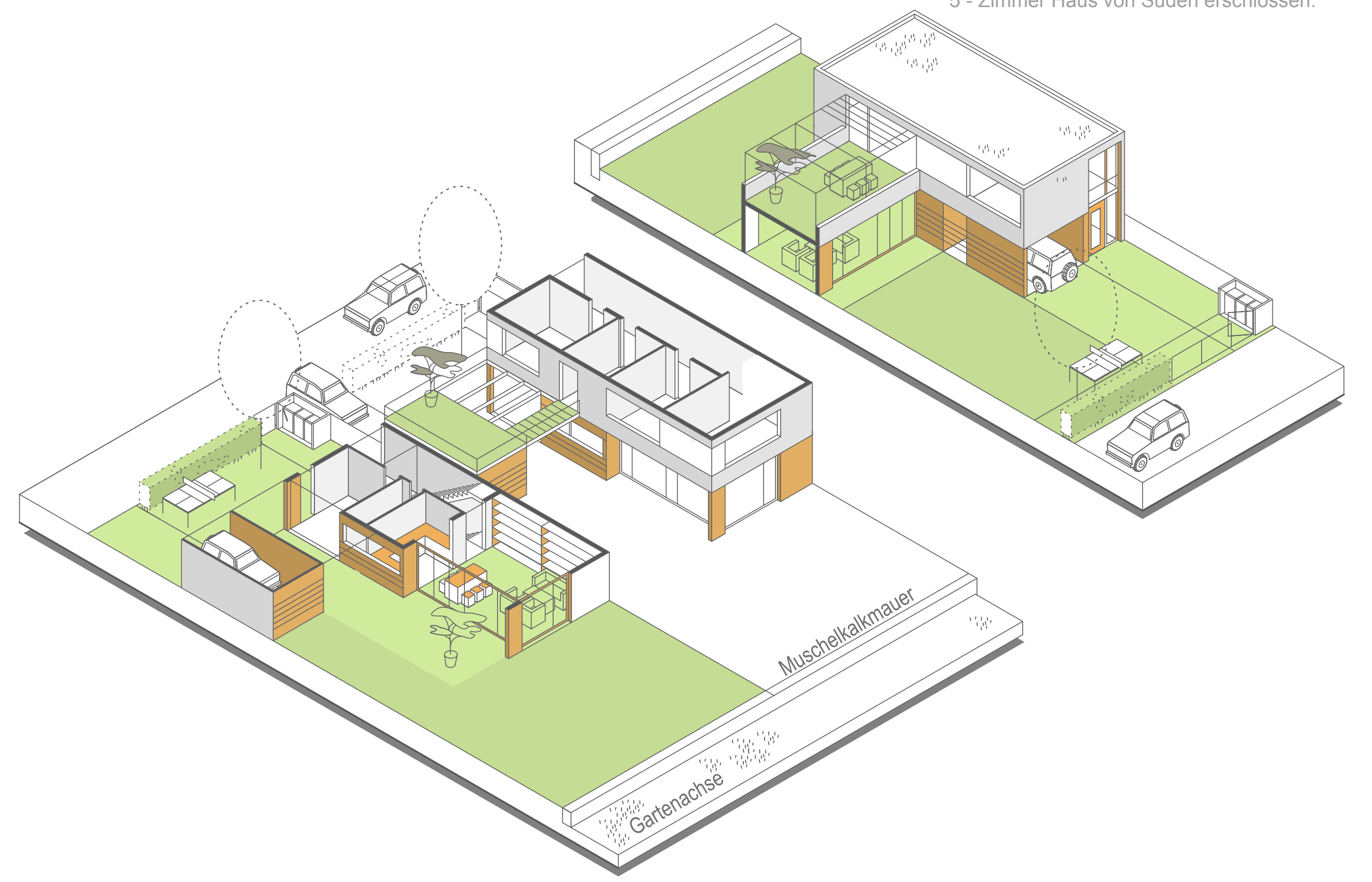
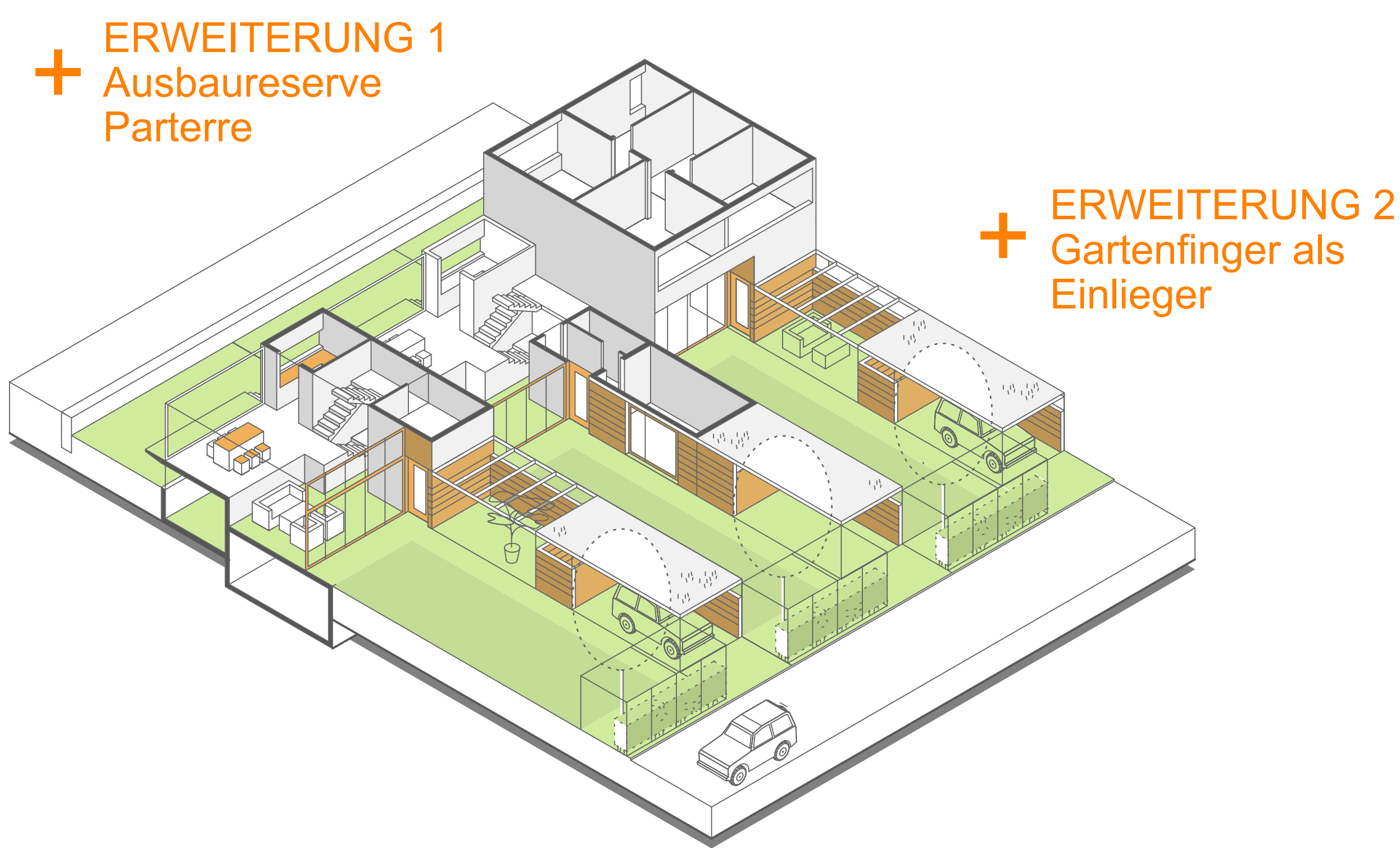
"Das wachsende Haus _ das Atriumhaus ist nachträglich um zwei Zimmer erweiterbar"

ATRIUMHAUS _ mit attraktivem überhöhtem Wohnbereich

"Das Winkelhaus umschließt private Freiräume"

WINKELHAUS _ Typ 1

WINKELHAUS _ Typ 2



Basismodul 109m² + Ausbau Parterre 20m² + Gartenfinger 14m² = Wfl. gesamt 109m² - 143m²

5 Zimmer - Haus = Wfl. gesamt 145m²

5 Zimmer - Haus = Wfl. gesamt 146m²

